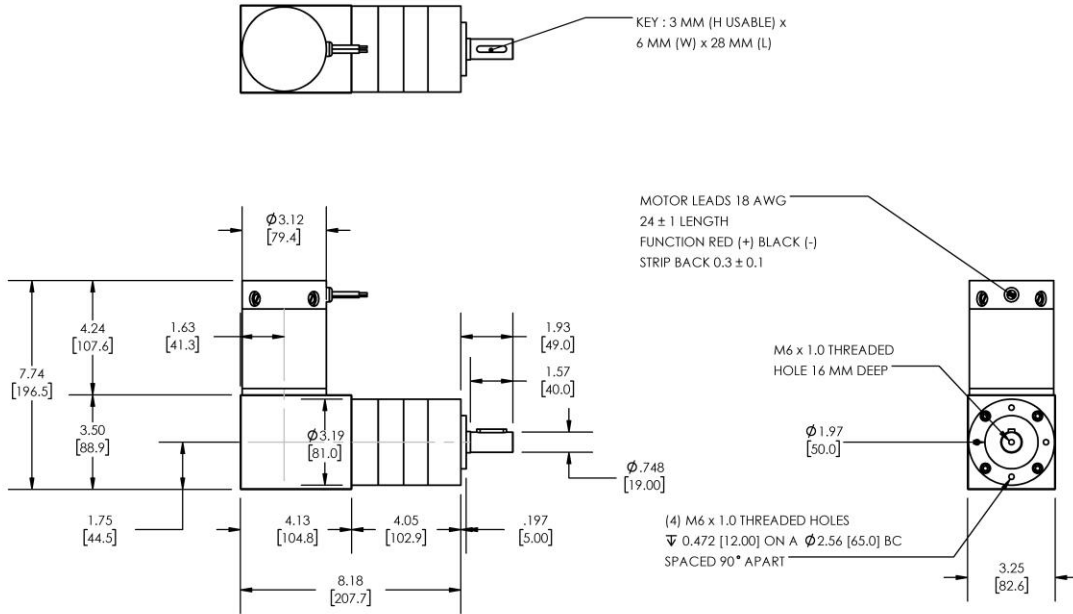


Model Number:

MMP D33-455G-36V GRA81-068



DIMENSIONS ARE INCHES [MM] UNLESS OTHERWISE STATED

| PLANETARY GEARMOTOR OUTPUT PARAMETERS: | VALUE | UNITS | TOLERANCE |
|--|--------------|-------------|-----------|
| Gearhead Ratio (exact) | 68.06 : 1 | | |
| Gearhead Shaft Output Speed (at full-load) | 34 | RPM | MAX |
| Gearmotor Rated Continuous Torque | 301 | In-Lbs | MAX |
| Gearmotor Rated Peak Torque | 878++ | In-Lbs | ---- |
| Gearhead Standard Backlash | 36 | Arc Minutes | MAX |
| Gearhead Efficiency | 70% | ---- | ---- |
| Output Shaft Radial Load Capacity | 225 | Lbs | MAX |
| Output Shaft Axial Load Capacity | 45 | Lbs | MAX |
| Gearmotor Total Weight | 16 | Lbs | MAX |

++ All Peak Torque values are dependent upon duty. Contact our sales office for details.

| DC MOTOR PERFORMANCE PARAMETERS: | VALUE | UNITS | TOLERANCE |
|----------------------------------|-------|-----------|-----------|
| Rated DC Voltage | 36 | DC VOLTS | ---- |
| Rated Continuous Current | 7.0 | AMPERES | ---- |
| No-Load Speed | 3077 | RPM | MAX |
| Rated Speed | 2311 | RPM | +/- 15% |
| Rated Continuous Power Out | 173 | WATTS | +/- 15% |
| Rated Continuous Torque | 101 | OZ-IN | ---- |
| Peak Torque (motor only) | 295 | OZ-IN | ---- |
| No-Load Current | 0.56 | AMPERES | MAX |
| Back EMF Constant (Ke) | 11.7 | V/KRPM | +/- 10% |
| Torque Constant (Kt) | 15.8 | OZ-IN/AMP | +/- 10% |
| DC Armature Resistance | 1.29 | OHMS | +/- 15% |
| Armature Inductance | 0.90 | mH | +/- 15% |
| Armature temperature | 155 | DEG. C | MAX |

NOTES:

- ENCODER & BRAKE OPTIONS AVAILABLE – [FOLLOW THIS LINK FOR DETAILS](#)
- NEMA MOUNTING FLANGE OPTION AVAILABLE – [FOLLOW THIS LINK FOR DETAILS](#)

MIDWEST MOTION PRODUCTS, INC

DESIGN, MANUFACTURING & DISTRIBUTION - MOTION CONTROL EQUIPMENT

www.midwestmotion.com

email: sales@midwestmotion.com